

Hotline: 4000-365-200



欧司特动力技术(江苏)有限公司

AERODYNAMIC SCIENCE & TECHNOLOGY
(JIANGSU) CO., LTD.

致力于研发与制造定制化/可靠/高效的离心式压缩机

Committed to R&D and Manufacturing of Customized/Reliable/High Efficient Centrifugal Compressor

欧司特动力技术(江苏)有限公司

AERODYNAMIC SCIENCE & TECHNOLOGY (JIANGSU) CO., LTD.

No. 22, Lianqun Road, Donggang Town, Xishan District, Wuxi

● 地址/ADD: 无锡市锡山区东港镇联群路22号

● 电话/TEL: 4000-365-200

● 邮箱E-MAIL: sales@astgas.com

● 网址/WEB: www.astgas.com

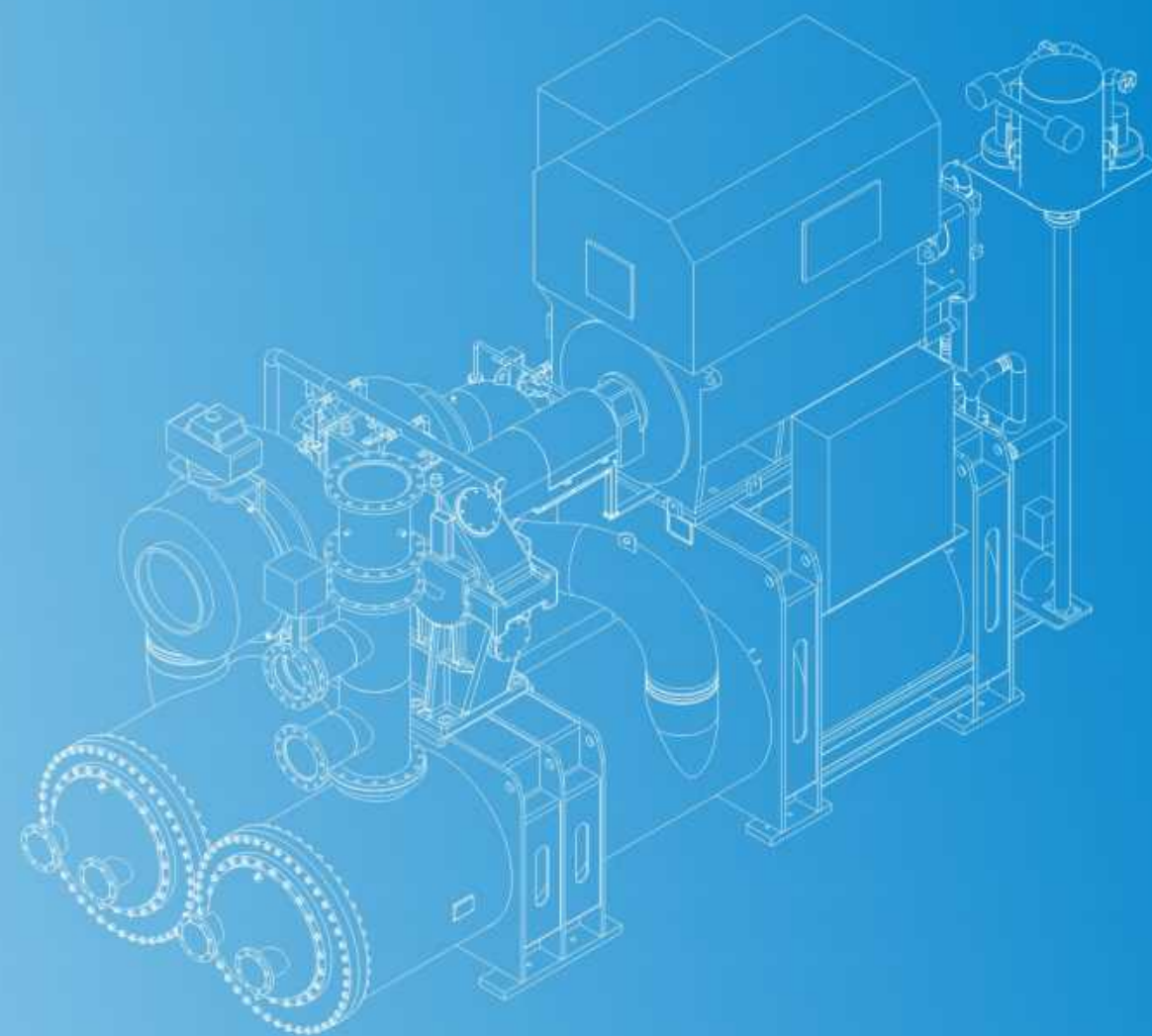
注: 由于产品不断升级更新, 产品图片及各种参数以订购发货时的实际情况为准。本资料解释权和版权属于欧司特动力技术(江苏)有限公司所有, 翻印必究。



快速选型反馈



官网了解更多



COMPANY PROFILE

欧司特简介 >



致力于

研发与制造定制化/可靠/高效的离心式压缩机

Committed to R&D and Manufacturing of Customized/High Efficient/Reliable Centrifugal Compressor

欧司特动力技术(江苏)有限公司专注于定制化/可靠/高效的离心式压缩机及其配套设备的研发、制造、销售，并提供及时可靠的优质技术服务，根据中国及全球市场应用客户对可靠性、节能性以及便于维护性及定制化要求，依托强大的自主设计团队不断进行设计优化和改进，已取得150+专利（含在审），并严格依照欧美标准进行制造和生产，致力于制造优质定制化的离心压缩机。

欧司特高可靠性节能型离心式压缩机产品流量范围涵盖：1,500-250,000Nm³/hr，排气压力范围涵盖0.6-150bar(g)，包括了AH、SH、TH、DH、LH等各类工艺压缩机和工厂用型压缩机。致力于满足钢铁、石油、化工、新能源、汽车、船舶、电子设备及机械、食品、医药行业和公用供电工程领域的各种需要，并向全球的顾客提供高效、优质的服务。

Aerodynamic Science&Technology (Jiangsu) Co., Ltd. focuses on the research, manufacture, and sales of customized, reliable, and efficient centrifugal compressors and their supporting equipment, and provides timely and reliable high-quality technical services. Based on the reliability, energy efficiency, ease of maintenance, and customization requirements of Chinese and global market application customers, we rely on a strong independent design team to continuously optimize and improve our design, and strictly manufacture and produce according to European and American standards, committed to manufacturing high-quality customized centrifugal compressors.

AST's high reliability and energy-saving centrifugal compressor products cover a flow range of 1,500-250,000Nm³/hr, and an exhaust pressure range of 0.6-150bar (g), including various process compressors such as AH, SH, TH, DH, LH, and factory type compressors. Committed to meeting the various needs of the steel, petroleum, chemical, new energy, automotive, shipbuilding, electronic equipment and machinery, food, pharmaceutical industries, and public power supply engineering, and providing efficient and high-quality services to customers worldwide.

AST MAJOR EVENTS

欧司特大事记 >



定制化高纯氩气离心压缩机 核心供应商

同比更高效

Customized high-purity argon centrifugal compressor core supplier

More efficient compared to peers



交付多台套CCUS订单

二氧化碳回收离心机
业内最高配置

Delivered to a CCUS order for multiple sets

Carbon dioxide recovery compressor
The highest configuration in the industry



交付易燃易爆腐蚀性混合气 离心压缩机

逐步汰换进口品牌

工艺气体+API+防爆

Delivered to a flammable, explosive, corrosive mixed gas centrifugal compressor

Beginning the replacement of imported brands
Process gas+API+Explosion-proof



交付头部空分企业

四级循环氮气增压离心机

Delivered to the top air separation enterprise

Four level circulation nitrogen booster compressor



获得天然气行业超大金额订单 业内最高标准

API+防爆+特殊定制化

Obtained huge order in the natural gas industry

The highest industry standard
API+Explosion-proof+Special Customization



交付世界最大空分企业

全球500强企业之一

循环增压机订单

Delivered to the world's largest air separation enterprise

One of the Fortune Global 500 enterprises
Circulation turbocharger order

PERFECT STRUCTURE
完美结构 >



PERFECT STRUCTURE

精密的装配工艺 >

齿轮箱 / Gear box

轴承、密封均为水平剖分式结构，吊起齿轮箱上盖即可维护，设备检修方便简单。转子轴采用推力环结构，无需推力轴承，结构简单，传动效率高，可靠性更高。

Horizontal split type for easy maintenance of the bearings and shaft seals. Thrust collar instead of thrust bearings. Which makes the structure simpler and increase the transmission efficiency and reliability.

迷宫式密封 / Labyrinth seal

非接触式设计，无磨损，零故障，寿命长，更换成本低，无需密封仪表气。采用水平剖分设计，维护检查方便。

The gas & oil seal is labyrinth type, which has no contact to the shaft, no abrasion, long life, and low maintenance, no consumption of instrument air, and also, horizontal split makes easier maintenance.

轴承 / Bearing

五瓣式可倾瓦，自动调芯能力强，抗冲击耐喘振，高导热高强度CC瓦块，有效降低轴承温度，提高转子系统长效可靠性。

Tilting pad journal bearing realize high-speed and stable operation. Pad tilt will self-adjust when the bearing load changes. CC pad of high heat conductivity and high strength can decrease the bearing temperature and promote the stability of the rotor system.

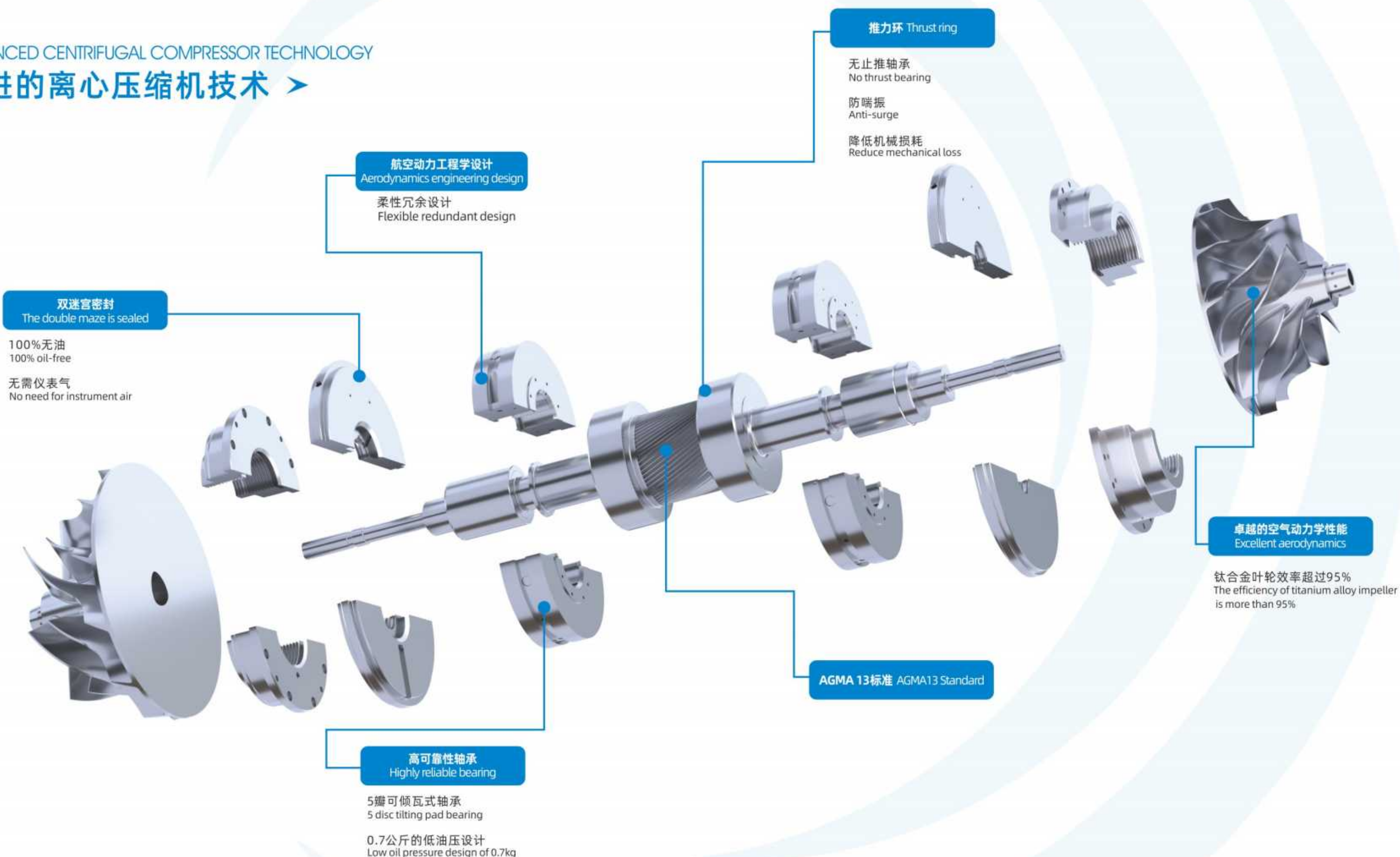
扩压器 / Diffuser

扩压器将气体的动能转化为静压能，与叶轮匹配设计的扩压器才能令整机高效。MA工艺表面处理，获得HV1300以上的表面硬度，持久耐磨耐腐蚀，提高扩压器3倍使用寿命。

The diffuser converts the kinetic energy of the gas into static pressure energy, and the diffuser with the impeller matching design can make the whole machine efficient. MA process surface treatment, to obtain the surface hardness of HV1300 or more, long-lasting abrasion resistance and corrosion resistance, to improve the service life of the diffuser by 3 times.

ADVANCED CENTRIFUGAL COMPRESSOR TECHNOLOGY

先进的离心压缩机技术 >



CUSTOMIZED IMPELLERS

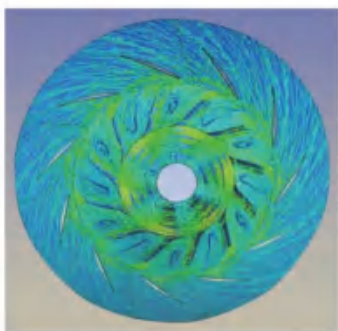
定制化叶轮



- ① 锻造五轴机加工
Forged five-axis machining
- ② 三元流后倾式设计
Ternary flow backward tilting design
- ③ 航空用钛合金材质
Titanium alloy for aviation
- ④ 特殊防腐表面处理
Special anti-corrosion surface treatment
- ⑤ 多次动静平衡试验
Multiple dynamic and static balance tests
- ⑥ 设计使用寿命30年以上
The design service life is more than 30 years

独有最优型线“黄金叶轮”机组，
更高的耐腐蚀性，避免紊流、减少超速阻塞。

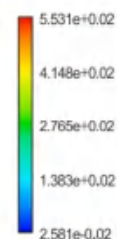
Unique optimized line "golden impeller" unit. Higher corrosion resistance, avoid turbulence and reduce overspeed congestion.



长效节能/Long term energy-saving

独有的第七代叶轮设计，定制化的叶轮、扩压器、蜗壳及冷却器等与应用需求匹配运行，达到最佳的等温效率和最低的机械损失，机组设计和制造考虑长效运行时效率的稳定，真正长效节能。

The unique seventh generation impeller design, customized impellers, diffusers, volutes, and coolers operate in accordance with application requirements, achieving the best isothermal efficiency and minimum mechanical losses. The unit design and manufacturing consider the stability of efficiency during long-term operation, truly achieving long-term energy-saving.

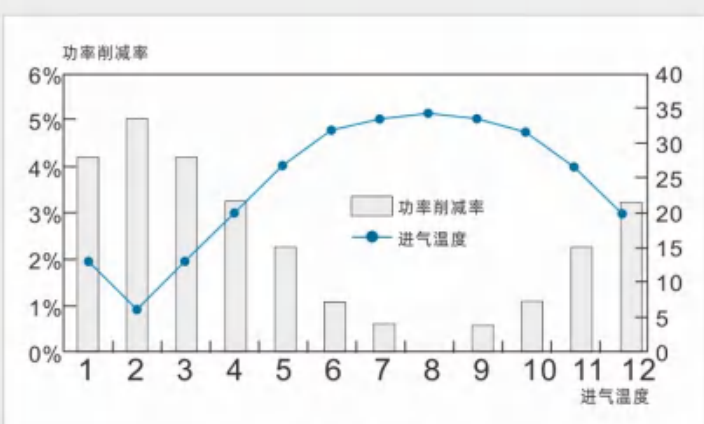
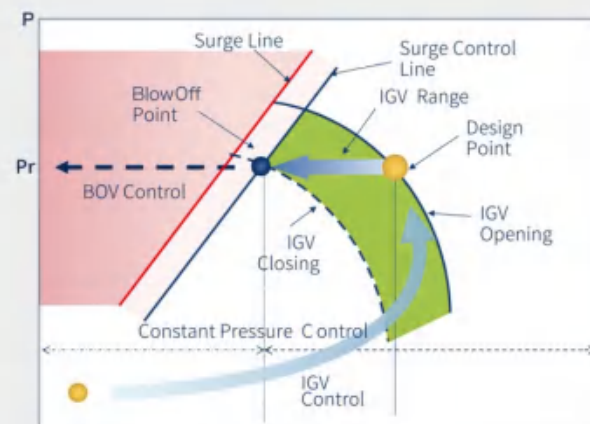


SMART ENERGY-SAVING CONTROL MODE

精准节能的调节模式

每一台机器传动部件都经过多次检测及校准，精度达到国际先进标准。传动损失更小，传动更平稳，噪音更低，寿命更长。

Each transmission component of the machine has undergone multiple tests and calibrations, with accuracy reaching international advanced standards. Reduced transmission loss, smoother transmission, lower noise, and longer lifespan.



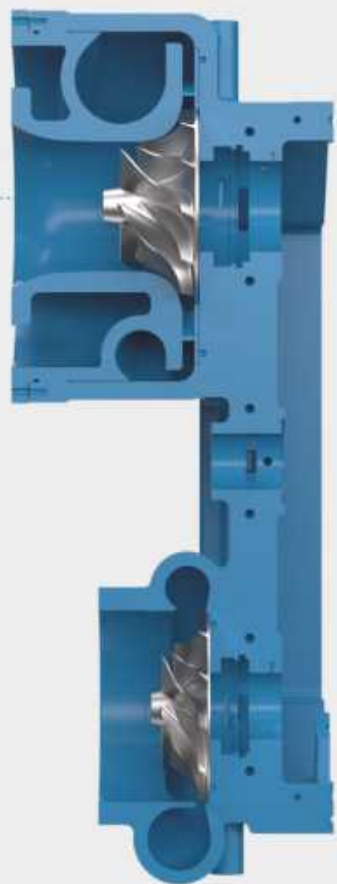
进口导叶节能效果
Energy-saving effect of imported guide vanes

HIGH EFFICIENT SCROLL

高效外蜗 >

内蜗设计 Involute Design

90°转角, 高气动损失
90° corner, High aerodynamic loss



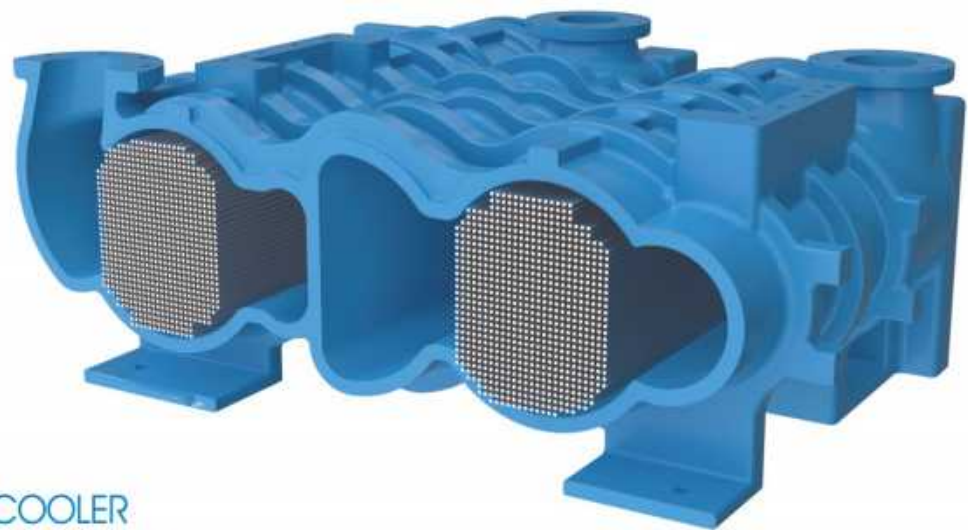
外蜗设计 Revolute Design

无转角, 零气动损失
Smooth flow, No aerodynamic loss



外蜗比内蜗气流少一次折流, 效率提高**2%**。

The external vortex has one less secondary flow than the internal vortex, resulting in a 2% increase in efficiency.



PATENTED 3D EFFICIENT COOLER

专利3D高效冷却器 >

- 水走管内气走管外, 清洗维护方便
Water in tube and air in shell, easy maintenance
- 专利型匀速变截面冷却器腔体设计
Variable cross-section patented design is adopted for cooler cabinet
- 流动损失小, 疏水效果佳
Low flow loss and better drainage
- 专利型自密封结构, 可靠性高, 维护简单
Patented self-seal structure, easy maintenance and more reliable
- 超大型设计, 适应极端工况
Super lager design can meet the extreme working condition
- 预留热回收设计, 提高能源综合利用效率
Allowance for heat recovery design, Which improves the comprehensive utilization efficiency of energy

SMART CLOUD PLATFORM CENTER

智慧云平台中心 >



数字空压站
Digital air compressor station

- 数据监测+可视化: 降低运行风险99%
Data monitoring+visualization: reducing operational risks by 99%
- 数据智慧驾驶舱, 全厂数据一览无余, 实时监控
Data Intelligent Cockpit, a comprehensive overview of factory data, real-time monitoring
- 故障在线预警、减少宕机风险
Online fault warning, reduction downtime risk
- 能耗负荷大数据分析
Big data analysis of energy consumption and load
- 车间综合诊断报表
Workshop comprehensive diagnostic report

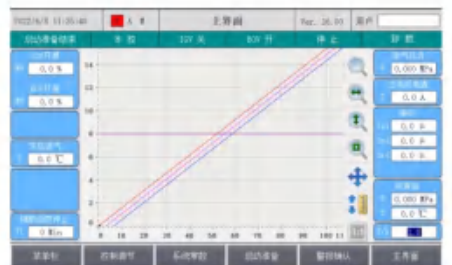


节能降耗
Energy conservation
Consumption reduction

- 全厂水电气智能报表, 自动统计
The whole plant's water, electricity, and gas intelligent report is automatically generated and summarized
- 全厂核心指标实时监控, 确保品质
Real-time monitoring of core indicators in the whole plant to ensure quality
- 设备定时自动巡检, 故障直转维保
Equipment is automatically inspected on a regular basis, and any faults are immediately transferred to maintenance



PLC触摸屏控制系统
PLC Touchscreen control system



- 7英寸触摸屏, 界面友好, 操作简单
7-inch touchscreen, user-friendly interface, simple operation
- 具有自动双重, 恒压控制和自平衡控制模式自动调节气量
Provides automatic dual control modes, constant pressure control and self-balancing control, to automatically adjust the air volume
- 显示全部运行参数, 提供参数设定
Displays all operating parameters and provides parameter settings
- 具有各类可调节式报警功能/停机功能/防喘振功能/喘振预测功能
It has various adjustable alarm function/stop function/anti-surge function/surge prediction function

故障预防
Fault prevention



- 手机、PAD、电脑可连接
Mobile phone, PAD, computer can be connected
- 实时进行优化分析
Real-time optimization analysis
- 实时预测判断潜在故障
Predict potential failures in real time
- 实时追踪、全天候云
Instant tracking, all-weather cloud

SPECIAL PROCESS GAS COMPRESSOR

特殊工艺气体压缩机 >

适用于空气分离、CCUS、压缩空气储能、火驱采油、富氧燃烧、氩气回收、MVR、VPSA、工艺气体等一系列定制化特殊要求。

Suitable for a series of customized special requirements such as air separation, CCUS, compressed air energy storage, fire driven oil recovery, oxygen-enriched combustion, argon recovery, MVR, VPSA, process gas, etc.



惰性气体压缩机

Inert Gas Compressor

流量范围 / Capacity range: 2,000-80,000Nm³/hr

压力范围 / Pressure range: 0.8-150 bar(g)

介质 / Medium: 空气 / 氮气 / 氩气 / 二氧化碳
Air / Nitrogen / Argon / Carbon dioxide



易燃易爆/腐蚀气体压缩机

Flammable and explosive/corrosive gas compressor

流量范围 / Capacity range: 3,000-48,000Nm³/hr

压力范围 / Pressure range: 0.8-150 bar(g)

介质 / Medium: 混合气 / 工艺气 Mixed gas / Process gas



循环增压机

Circulating Booster

流量范围 / Capacity range: 10,000-130,000Nm³/hr

压力范围 / Pressure range: 4-30 bar(g)

介质 / Medium: 空气 / 氮气 Air / Nitrogen



空气压缩机

Air Compressor

流量范围 / Capacity range: 1,500-250,000Nm³/hr

压力范围 / Pressure range: 0.8-150 bar(g)

介质 / Medium: 空气 Air






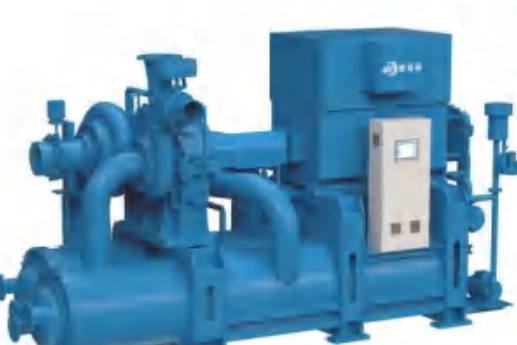
AST SOLUTION

完善的解决方案 >

 <p>安全/可靠/环保/节能 Safe/Reliable/Environmentally friendly/Energy efficient</p>	 <p>低噪音/低振动 Low noise/Low vibration</p>	 <p>节能型干燥机 Energy saving dryer</p>	 <p>无需仪表气 No instrument gas required</p>
 <p>维护方便, 成本低 Easy maintenance low cost</p>	 <p>整体撬装式, 安装方便 Overall pry mounted, easy to install</p>	 <p>100%无油、无硅 100% oil-free silicone-free</p>	 <p>1-8级可供选择 1-8 stage available</p>
 <p>无需密封气 No sealing gas required</p>	 <p>PLC+触摸屏 界面友好, 操作简便 PLC + touch screen, friendly interface, easy to operate</p>	 <p>喘振保护 Surge protection</p>	 <p>5G云预警平台 5G cloud warning platform</p>
 <p>热回收等系统成套 Heat recovery and other system packages</p>	 <p>无需特殊基础和预埋地脚螺栓 No need for special foundations and pre-built ground bolts</p>	 <p>合同能源管理 Contractual energy management</p>	 <p>站房整体解决方案 Station room overall solution</p>

AST CENTRIFUGAL COMPRESSORS SERIES

欧司特离心压缩机系列 >

 <p>AH 系列</p>	<p>流量范围 / Capacity range: 1,500-5,000Nm³/hr</p> <p>排气压力 / Discharge pressure: 0.6-13bar(g)</p> <p>主电机功率 / Main motor power: 100-800KW</p> <p>主机电压 / Main motor voltage: 380V/3KV/6KV/10KV/50Hz/3Ph</p> <p>底座尺寸 / Base size: 3,400mmx2,200mm</p> <p>重量 / Weight: 7,000Kg-8,000kg</p>
 <p>SH 系列</p>	<p>流量范围 / Capacity range: 5,000-12,000Nm³/hr</p> <p>排气压力 / Discharge pressure: 0.6-20bar(g)</p> <p>主电机功率 / Main motor power: 300-1,680KW</p> <p>主机电压 / Main motor voltage: 380V/3KV/6KV/10KV/50Hz/3Ph</p> <p>底座尺寸 / Base size: 4,000mmx2,300mm</p> <p>重量 / Weight: 9,000Kg-11,000kg</p>
 <p>TH 系列</p>	<p>流量范围 / Capacity range: 10,000-20,000Nm³/hr</p> <p>排气压力 / Discharge pressure: 0.6-20bar(g)</p> <p>主电机功率 / Main motor power: 600-2,500KW</p> <p>主机电压 / Main motor voltage: 3KV/6KV/10KV/50Hz/3Ph</p> <p>底座尺寸 / Base size: 5,000mmx2,300mm</p> <p>重量 / Weight: 16,000Kg-20,000kg</p>
 <p>LH 系列</p>	<p>流量范围 / Capacity range: 5,000-250,000Nm³/hr</p> <p>排气压力 / Discharge pressure: 0.6-150bar(g)</p> <p>主电机功率 / Main motor power: 300-30,000KW</p> <p>主机电压 / Main motor voltage: 380KV/3KV/6KV/10KV/50Hz/3Ph</p>

选型时请咨询欧司特以具体技术方案为准

We have subsidiaries and service centers worldwide to better provide products and services to our customers.

AST is committed to providing fast and convenient services, for which we have established a service network nationwide. In addition to our Wuxi headquarters, we have also established service centers in various cities across the country.

The diagram illustrates a six-stage service process flow:

- Free guidance on equipment installation and debugging** (Icon: Person at a board)
- 24-hour service** (Icon: Person at a desk)
- Annual training for operational engineers** (Icon: Person at a podium)
- Life cycle Maintenance service** (Icon: Document with a pencil)
- Timely provision of emergency Common spare parts** (Icon: Gear and wrench)
- Regular free door-to-door visits Provide equipment inspection services** (Icon: Person with a clipboard)

The image displays a collection of logos for various companies, arranged in a grid-like pattern. The central logo is **AST 欧司特**. Surrounding it are logos for companies such as **Air Liquide**, **CNOOC**, **TrinaSolar**, **BYD**, **Baosteel**, **JASolar**, **Wanhua**, **Jiangsu Shangshang**, **Tongwei**, **Lu'an Group**, **Hengyi**, **Jinko**, **Chery**, **New Reyphon**, **Shenhua**, **Teamwin**, **Dynamic**, **CNCEC**, **Gazprom**, **CUCC**, **Yuhu Glass**, **KLPC**, **NHU**, and **Wanzhou**. Each logo is presented in its original color and design, with some including text in both Chinese and English.